



## EOLI FPS ADVANTAGES

- **Enhanced performance**  
(Wide operating range).
- **High efficiency for turbulent winds in any speed**  
(high or low) scheme.
- **Building-integrated.**
- **Groupable.**
- **No external moving parts.**
- **No need to be installed at height.**
- **Low operating noise**  
(lower noise pollution).
- **Portable**  
(small and easy to transport).
- **No need for a yaw mechanism.**

A NEW WIND TURBINE WITH A SIMPLE OBJECTIVE:

Get the best possible performance in any incident wind condition. (Laminar or turbulent).

This new design turbines makes them incredibly silent, lightweight and highly efficient for energy production, being the technology suitable for both renewable systems on-grid/off-grid and marine applications. Allows a greater wind power use, with higher yields than the current wind turbines in same incident winds.

**The innovative EOLI FPS wind turbine presents a much higher output and energy efficiency in less space, making it a really suitable product especially in urban areas.**

[www.eolifps.com](http://www.eolifps.com)

## About Us

REACCIÓN UPtheworld's proprietary products bring innovation to the renewable energy industry and its associated technology.

We combine innovative ways of harnessing renewable energy with effective business management, a firm commitment to the environment and unbeatable service.

We offer viable alternative energy solutions (principally wind power) and make our primary goal sustainable human development in harmony with the environment.



Co-funded by the Horizon 2020 programme of the European Union

## Contact

+ 34 902 054 234

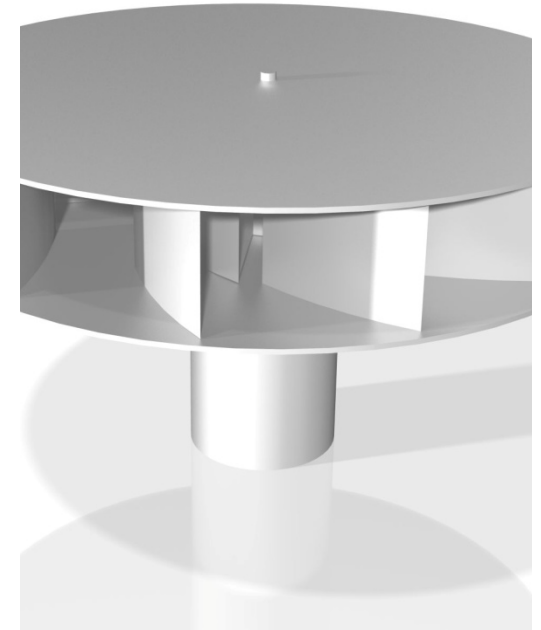
[info@uptheworld.es](mailto:info@uptheworld.es)

[www.uptheworld.es](http://www.uptheworld.es)



**REACCIÓN UPtheworld SL**

Calle Lui I, 60 – 3ª Planta  
28031 Madrid – España



 **EOLI FPS**

*Tomorrow's wind power  
technology today*

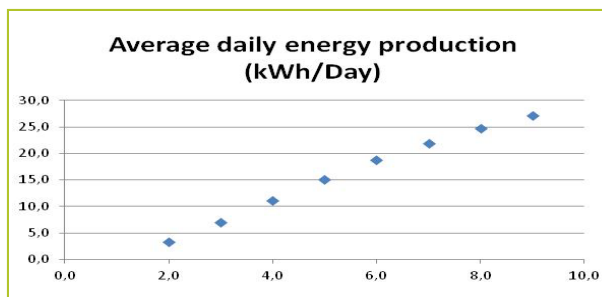
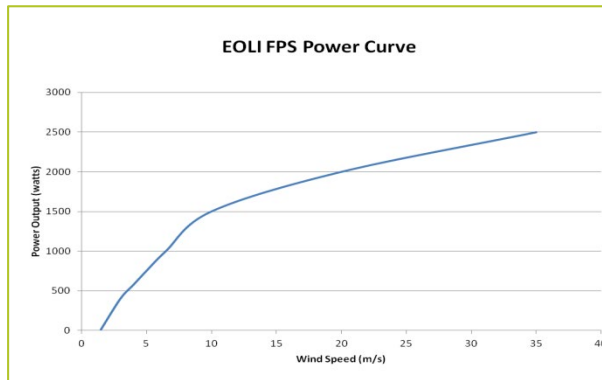


Co-funded by the Horizon 2020 programme of the European Union

*This project has received funding from the European Union's Horizon 2020 research and innovation programme under grant agreement n° 816706*

## TECHNICAL SPECIFICATIONS EOLI FPS

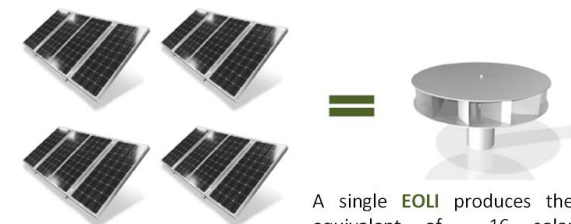
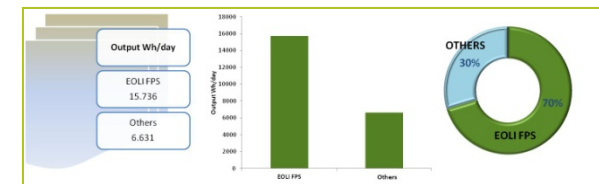
RATED POWER	1000 W
MAXIMUM POWER	3000 W
ROTOR SPEED AT NOMINAL	200 r.p.m.
RATED SPEED	6 m/s
CUT-IN SPEED	2 m/s
CUT-OUT SPEED	35 m/s
HEIGHT	90 cm
DIAMETER	120 cm
WEIGHT	143 kg.
TYPE	Vertical Rotor
GENERATOR	PMG. Synchronous. 3 phase
RATED VOLTAGES	115 Vac 50Hz Optionals 12, 24, 48 Volts 50/60Hz
YAW MECHANISM	Not required
DRIVE SYSTEM	Direct Drive
CONTROL SYSTEM	Grid Connection or Battery Charge
NOISE	<25db.
CORROSION PROTECTION	Totally Sealed Design
TOWER	Not required



	4	5	6	7	8	9	10	11	12	14
m/s	4	5	6	7	8	9	10	11	12	14
km/h	14	18	22	25	29	32	36	40	43	50
mph	9	11	13	16	18	20	22	25	27	31

EOLI FPS is a registered product by UPTHEWORLD. PCT201231411

Average wind speed location (m/s)	Average daily energy production (kWh/Day)
2,0	3,3
3,0	7,0
4,0	11,1
5,0	15,1
6,0	18,7
7,0	21,9
8,0	24,7
9,0	27,1



A single EOLI produces the equivalent of 16 solar photovoltaic panels of 250 wp.